

Allerdale

updated 28 July 2010

This profile gives a picture of health in this area. It is designed to help local government and health services improve people's health and reduce health inequalities.

Health Profiles are produced every year by the Association of Public Health Observatories.

Visit the Health Profiles website to:

- see profiles for other areas
- use interactive maps
- find more detailed information

www.healthprofiles.info



Based on Ordnance Survey material. © Crown Copyright. All rights reserved. DH 100020290 2010. Other map data © Collins Bartholomew.

Population 94,500

Mid-2008 population estimate

Source: National Statistics website: www.statistics.gov.uk

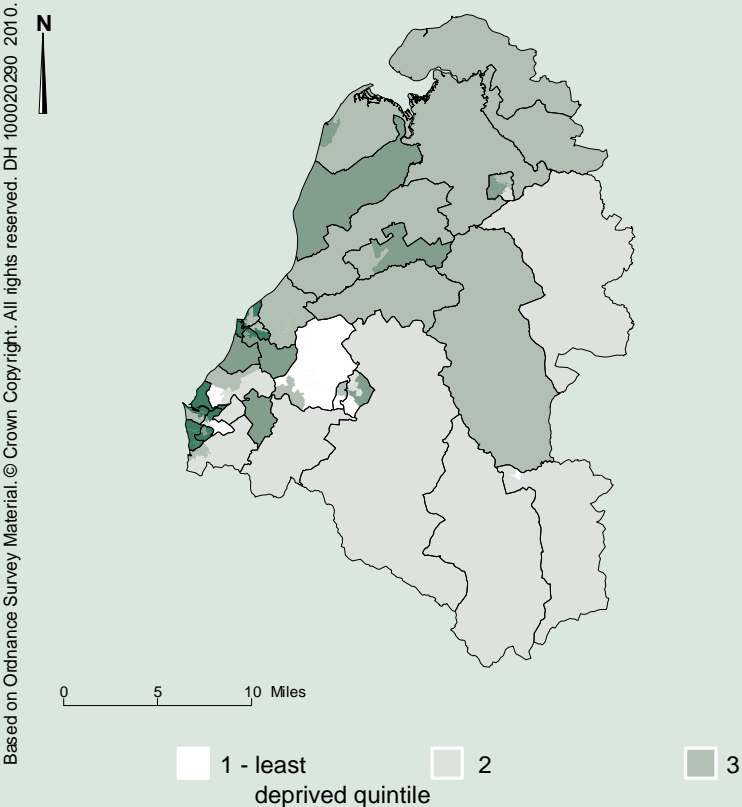
Allerdale at a glance

- The health of people in Allerdale is varied. The estimated percentage of binge drinking adults is similar to the average for England, and the rate of violent crime is better than the England average. However, the rate of hospital stays for alcohol related harm and the percentage of people diagnosed with diabetes are worse than the England average.
- There are inequalities within Allerdale. For example, men from the least deprived areas can expect to live over 6 years longer than men from the most deprived areas. For women this difference is nearly 5 years.
- Over the last decade there has been a fall in death rates from all causes for men and in early death rates from cancer, and from heart disease and stroke. These rates are now similar to the England average.
- The health of children and young people is varied. For example, the percentages of children classified as obese and of physically active children are better than the England average. However, the percentage of mothers initiating breast feeding is worse than the England average.
- The Cumbria Local Area Agreement has prioritised tackling smoking, alcohol misuse, and teenage pregnancy over the next 3 year period.
- Local priorities and actions developed by the West Cumbria Strategic Partnership can be found in the Baseline and Action plan available at www.cumbria.nhs.uk

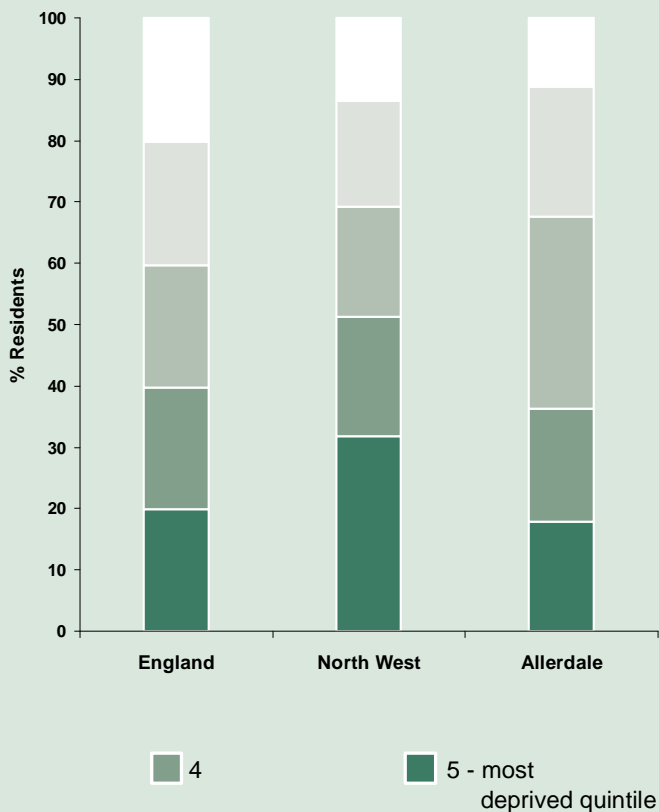


Deprivation: a national view

This map shows differences in deprivation levels in this area based on national quintiles (of the Index of Multiple Deprivation 2007 by Lower Super Output Area). The darkest coloured areas are some of the most deprived areas in England.

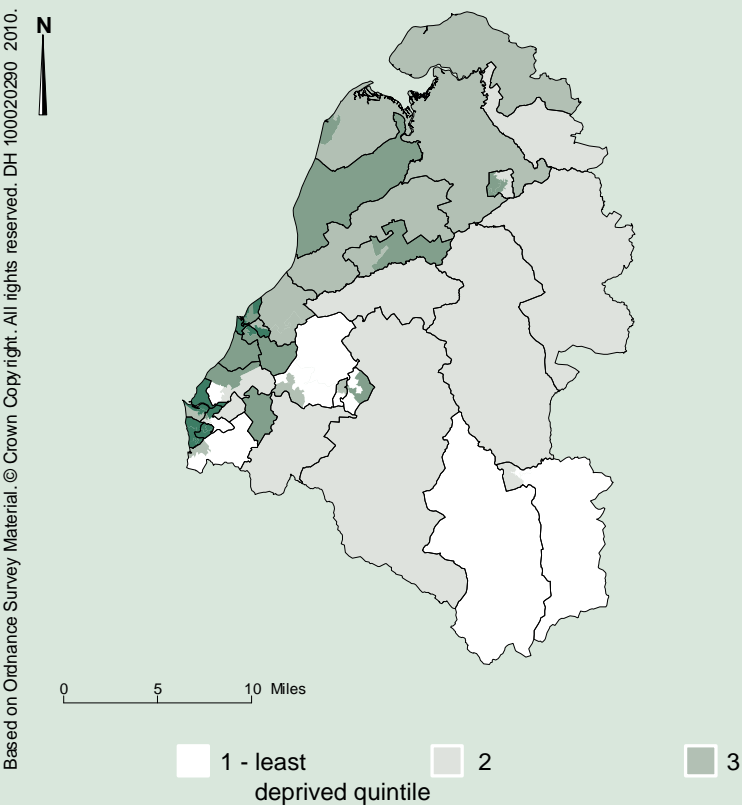


This chart shows the percentage of the population in England, this region, and this area who live in each of these quintiles.

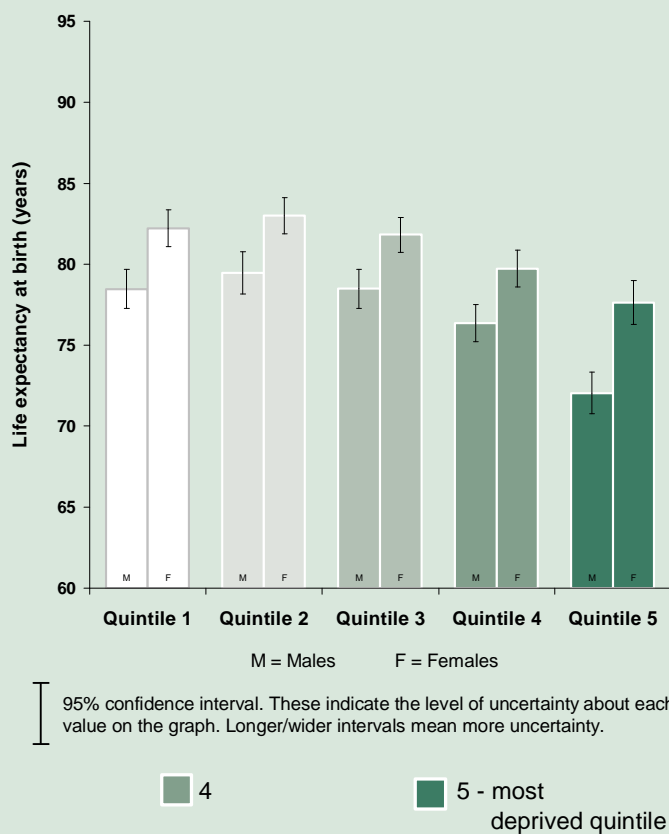


Health inequalities: a local view

This map shows differences in deprivation levels in this area based on local quintiles (of the Index of Multiple Deprivation 2007 by Lower Super Output Area). The darkest coloured areas are the most deprived in this area.



This chart shows the life expectancy at birth for males and females (2004-2008) for each of the quintiles in this area.



Health inequalities: changes over time

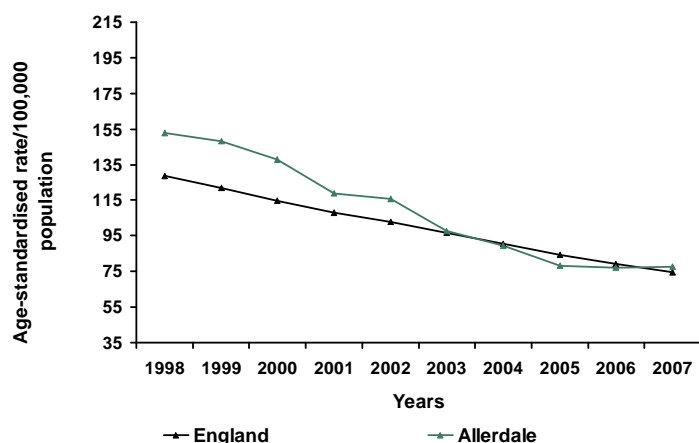
These graphs show how changes in death rates for this area compare with changes for the whole of England. Data points on the graph are mid-points of 3-year averages of yearly rates. For example the dot labelled 2003 represents the 3-year period 2002 to 2004.

Trend 1 compares rates of death, at all ages and from all causes, in this area with those for England.

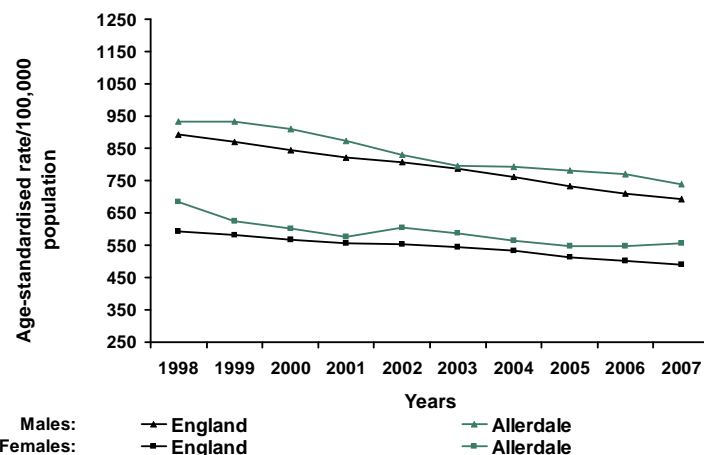
Trend 2 compares rates of early death from heart disease and stroke (in people under 75) in this area with those for England.

Trend 3 compares rates of early death from cancer (in people under 75) in this area with those for England.

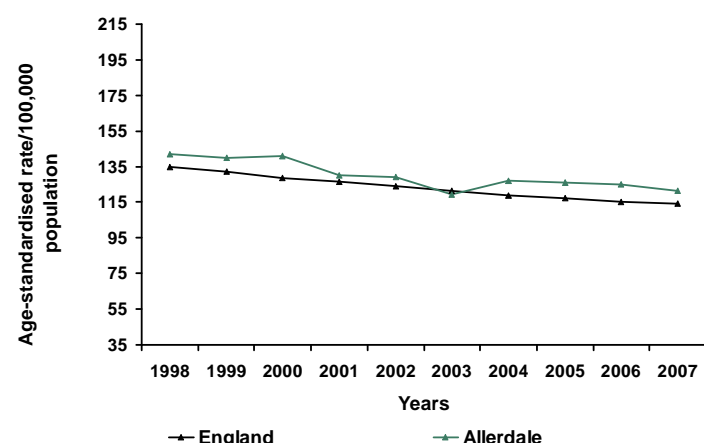
Trend 2: Early death rates from heart disease and stroke



Trend 1: All age, all cause mortality

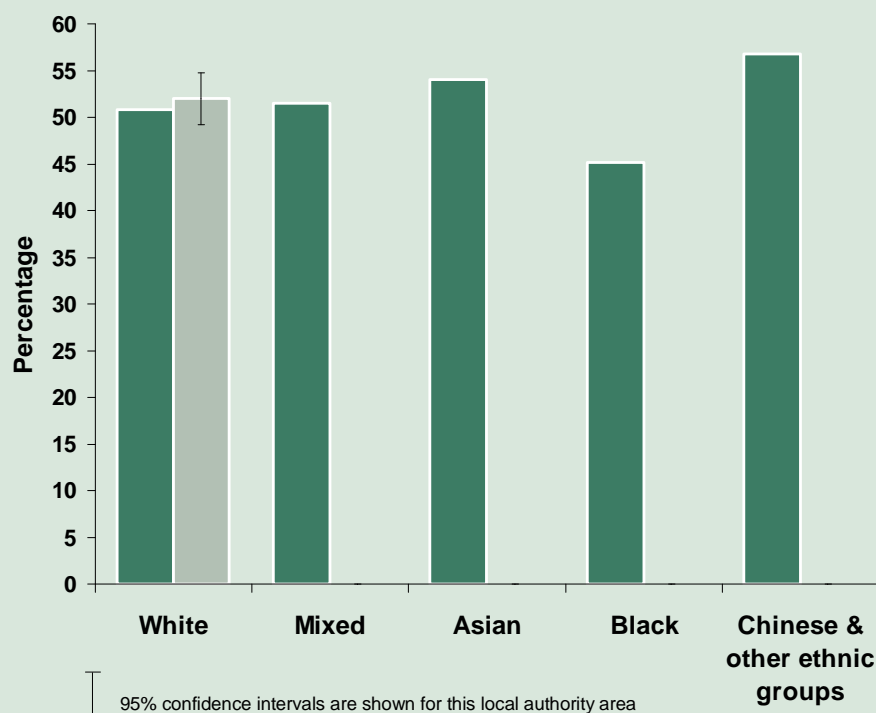


Trend 3: Early death rates from cancer



Health inequalities: ethnicity

This chart shows the percentage of pupils by ethnic group in this area who achieved five GCSEs in 2008/09 (A* to C grades including English and Maths). Comparing results may help find possible inequalities between ethnic groups.



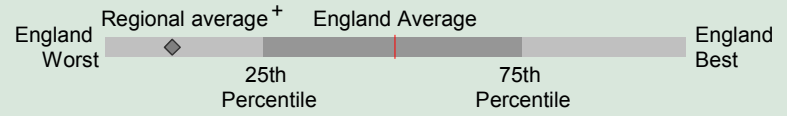
Legend:
■ England
■ Allerdale

Ethnic Groups	% pupils achieved grades	No. of pupils achieved grades
White	52.0	640
Mixed		
Asian		
Black		
Chinese/other		

If there are any empty cells in the table this is because data has not been presented where the calculation involved pupil numbers of 0, 1 or 2. Some further groups may not have data presented in order to prevent counts of small numbers being calculated from values for other ethnic groups or areas.

The chart below shows how the health of people in this area compares with the rest of England. This area's result for each indicator is shown as a circle. The average rate for England is shown by the red line, which is always at the centre of the chart. The range of results for all local areas in England is shown as a grey bar. A red circle means that this area is significantly worse than England for that indicator; however, a green circle may still indicate an important public health problem.

- Significantly worse than England average
- Not significantly different from England average
- Significantly better than England average
- No significance can be calculated



⁺ In the South East Region this represents the Strategic Health Authority average

Domain	Indicator	Local No. Per Year	Local Value	Eng Avg	Eng Worst	England Range	Eng Best
Our communities	1 Deprivation	16875	17.9	19.9	89.2	[Bar chart showing local value at 17.9, England average at 19.9, and range from ~10 to ~30]	0.0
	2 Children in poverty	3167	18.5	22.4	66.5	[Bar chart showing local value at 18.5, England average at 22.4, and range from ~10 to ~30]	6.0
	3 Statutory homelessness	118	2.87	2.48	9.84	[Bar chart showing local value at 2.87, England average at 2.48, and range from ~1 to ~10]	0.00
	4 GCSE achieved (5A*-C inc. Eng & Maths)	657	52.0	50.9	32.1	[Bar chart showing local value at 52.0, England average at 50.9, and range from ~30 to ~70]	76.1
	5 Violent crime	1368	14.5	16.4	36.6	[Bar chart showing local value at 14.5, England average at 16.4, and range from ~10 to ~30]	4.8
	6 Carbon emissions	1013	10.7	6.8	14.4	[Bar chart showing local value at 10.7, England average at 6.8, and range from ~5 to ~15]	4.1
Children and young people's health	7 Smoking in pregnancy			14.6	33.5	[Bar chart showing local value at 14.6, England average at 14.6, and range from ~10 to ~25]	3.8
	8 Breast feeding initiation	610	67.2	72.5	39.7	[Bar chart showing local value at 67.2, England average at 72.5, and range from ~50 to ~80]	92.7
	9 Physically active children	7495	56.3	49.6	24.6	[Bar chart showing local value at 56.3, England average at 49.6, and range from ~30 to ~70]	79.1
	10 Obese children	52	6.4	9.6	14.7	[Bar chart showing local value at 6.4, England average at 9.6, and range from ~5 to ~15]	4.7
	11 Tooth decay in children aged 5 years	n/a	1.4	1.1	2.5	[Bar chart showing local value at 1.4, England average at 1.1, and range from ~0.5 to ~2.5]	0.2
	12 Teenage pregnancy (under 18)	74	40.1	40.9	74.8	[Bar chart showing local value at 40.1, England average at 40.9, and range from ~30 to ~70]	14.9
Adults' health and lifestyle	13 Adults who smoke	n/a	20.9	22.2	35.2	[Bar chart showing local value at 20.9, England average at 22.2, and range from ~15 to ~30]	10.2
	14 Binge drinking adults	n/a	21.4	20.1	33.2	[Bar chart showing local value at 21.4, England average at 20.1, and range from ~15 to ~30]	4.6
	15 Healthy eating adults	n/a	27.6	28.7	18.3	[Bar chart showing local value at 27.6, England average at 28.7, and range from ~20 to ~35]	48.1
	16 Physically active adults	n/a	12.6	11.2	5.4	[Bar chart showing local value at 12.6, England average at 11.2, and range from ~10 to ~15]	16.6
	17 Obese adults	n/a	24.3	24.2	32.8	[Bar chart showing local value at 24.3, England average at 24.2, and range from ~20 to ~30]	13.2
Disease and poor health	18 Incidence of malignant melanoma	10	10.2	12.6	27.3	[Bar chart showing local value at 10.2, England average at 12.6, and range from ~5 to ~20]	3.7
	19 Incapacity benefits for mental illness	1640	29.4	27.6	58.5	[Bar chart showing local value at 29.4, England average at 27.6, and range from ~20 to ~40]	9.0
	20 Hospital stays for alcohol related harm	2269	1880	1580	2860	[Bar chart showing local value at 1880, England average at 1580, and range from ~1000 to ~2500]	784
	21 Drug misuse					[Bar chart showing local value at 0, England average at 0, and range from ~0 to ~10]	
	22 People diagnosed with diabetes	4247	4.49	4.30	6.72	[Bar chart showing local value at 4.49, England average at 4.30, and range from ~3 to ~6]	2.69
	23 New cases of tuberculosis	1	1	15	110	[Bar chart showing local value at 1, England average at 15, and range from ~0 to ~30]	0
	24 Hip fracture in over-65s	127	558.1	479.2	643.5	[Bar chart showing local value at 558.1, England average at 479.2, and range from ~400 to ~600]	273.6
Life expectancy and causes of death	25 Excess winter deaths	50	14.4	15.6	26.3	[Bar chart showing local value at 14.4, England average at 15.6, and range from ~10 to ~20]	2.3
	26 Life expectancy - male	n/a	77.4	77.9	73.6	[Bar chart showing local value at 77.4, England average at 77.9, and range from ~75 to ~80]	84.3
	27 Life expectancy - female	n/a	80.6	82.0	78.8	[Bar chart showing local value at 80.6, England average at 82.0, and range from ~78 to ~84]	88.9
	28 Infant deaths	4	4.17	4.84	8.67	[Bar chart showing local value at 4.17, England average at 4.84, and range from ~3 to ~7]	1.08
	29 Deaths from smoking	203	243.1	206.8	360.3	[Bar chart showing local value at 243.1, England average at 206.8, and range from ~150 to ~300]	118.7
	30 Early deaths: heart disease & stroke	95	77.7	74.8	125.0	[Bar chart showing local value at 77.7, England average at 74.8, and range from ~60 to ~90]	40.1
	31 Early deaths: cancer	149	121.4	114.0	164.3	[Bar chart showing local value at 121.4, England average at 114.0, and range from ~100 to ~150]	70.5
	32 Road injuries and deaths	65	69.1	51.3	167.0	[Bar chart showing local value at 69.1, England average at 51.3, and range from ~40 to ~80]	14.6

Indicator Notes

1 % of people in this area living in 20% most deprived areas of England 2007 2 % of children living in families receiving means-tested benefits 2007 3 Crude rate per 1,000 households 2008/09 4 % at Key Stage 4 2008/09 5 Recorded violence against the person crimes crude rate per 1,000 population 2008/09 6 Total end user CO₂ emissions per capita (tonnes CO₂ per resident) 2007 7 % of mothers smoking in pregnancy where status is known 2008/09 8 % of mothers initiating breast feeding where status is known 2008/09 9 % of year 1-13 pupils who spend at least 3 hours per week on high quality PE and school sport 2008/09 10 % of school children in reception year 2008/09 11 Weighted mean number of teeth per 5 yr old child sampled that were actively decayed, missing or filled 2007/08 12 Under-18 conception rate per 1,000 females aged 15-17 (crude rate) 2006-2008 (provisional) 13 % adults, modelled estimate using Health Survey for England 2006-2008 14 % adults, modelled estimate using Health Survey for England 2007-2008 15 % adults, modelled estimate using Health Survey for England 2006-2008 16 % aged 16+ 2008/09 17 % adults, modelled estimate using Health Survey for England 2006-2008 18 Directly age standardised rate per 100,000 population under 75 2004-2006 19 Crude rate per 1,000 working age population 2008 20 Directly age and sex standardised rate per 100,000 population 2008/09 (rounded) 21 New Problematic Drug User estimates were not available in time for inclusion 22 % of people on GP registers with a recorded diagnosis of diabetes 2008/09 23 Crude rate per 100,000 population 2006-2008 24 Directly age-standardised rate per 100,000 population for emergency admission 2008/09 25 Ratio of excess winter deaths (observed winter deaths minus expected deaths based on non-winter deaths) to average non-winter deaths 1.08.05- 31.07.08 26 At birth, 2006-2008 27 At birth, 2006-2008 28 Rate per 1,000 live births 2006-2008 29 Per 100,000 population age 35+, directly age standardised rate 2006-2008 30 Directly age standardised rate per 100,000 population under 75, 2006-2008 31 Directly age standardised rate per 100,000 population under 75, 2006-2008 32 Rate per 100,000 population 2006-2008

More indicator information is available in The Indicator Guide: www.healthprofiles.info For information on your area contact your regional PHO: www.apho.org.uk

You may use this profile for non-commercial purposes as long as you acknowledge where the information came from by printing 'Source: APHO and Department of Health. © Crown Copyright 2010'.